

Texas Living: People & Places
A BONUS SECTION FOR OUR TEXAS READERS

Southern Living®

The heart of Southern life

57 *pages of*
Idea Houses

Best of Summer

Details for a Poolside Haven

Three Girlfriend Getaways

Grill Something New

Last-minute Florida
Vacation Deals

Quick & Simple

Refreshing Chilled Soups

Salads That Make a Meal

Easy Chicken Supper
Solutions

plus:

**Dozens of
Designer Tips
& Tricks**

AUGUST 2007

\$4.99US \$6.50CAN



southernliving.com

Idea House 2007

Come on in, the back door's open. Take a look
at our houses, and find tips for your own.

What's so special about our three Idea Houses this year? Each one presents a fresh spin on Southern style. Tucker Bayou in WaterSound, Florida, takes coastal design to a new level with a look that's casual and just this side of contemporary. Sarasen Bluff, located in Hot Springs, Arkansas, pays tribute to the traditional, with a masterful blending of classic elements and updated decor. In Greensboro, Georgia, Kousa Creek is a truly inviting cottage that puts comfortable surroundings in the spotlight. Created with help from our national sponsors, each of these homes comes to life on the following pages. Welcome. We hope you enjoy the tour.



Tucker Bayou

Color, comfort, and stylish collections

create a pretty and personal retreat.

Bold hues and brilliant collections add waves of style inside Tucker Bayou, our Florida Idea House. Smart design choices showcase the personal and the practical. Ergonomic design in the kitchen puts the chef at ease, while a family work center keeps track of everything from kids' calendars to dog leashes. Inside and out, this Florida hide-away located on a golf course in WaterSound is the perfect combination of luxe and laid-back. Even if you live hours from a beach, who says casual coastal charm can't be yours for the taking? ►



by AMY BICKERS MERCER • photography CHARLES WALTON IV
styling BUFFY HARGETT



Think Outside The Box

Tucker Bayou will change the way you think about modular. A factory-built house from Haven Custom Homes, Inc., it was shipped in sections from South Carolina and assembled on-site. Because the components are built inside a factory, construction time is not delayed by weather or other lot conditions.

While this house was being built off-site, The St. Joe Co. took charge of constructing the home's foundation. Upon arrival, the components were placed on the foundation by a crane, resulting in a nearly complete home within days. According to Haven Custom Homes, Inc., a project is finished in about a third of the time of conventional construction. Labor and cleanup costs are reduced as well.

Don't be fooled by the home's assembly-line origin. It's not a one-size-fits-all concept. These homes can be fully customized for any homeowner's needs. The components, built to meet state and local regulations, are inspected throughout the building process. The end result gives no clues to its factory-built beginning. "It feels like a site-built house," says Tucker Bayou architect Carson Looney. "In fact, the integrity of the home is enhanced. Engineering-wise, it's better than a site-built home." Find out more at www.havenhomes.com.

breakfast room

Mealtime Tales

Built-ins in the dining room hold the key to the homeowners' character. "If you take all your things and put them together, a collection can tell a story about who you are," says interior designer Ann Nordeen Parker. "The style here is simple and clean, but the art collection is gutsy." Need books just for looks? Shop thrift stores or library sales—Ann found dozens of books for less than a buck. She turned them around on the shelves to complement the neutral palette. ►





Create a Gallery

Hallways such as this foyer make the perfect place to show off photo collections. Framing them similarly draws attention to the pictures rather than the frames. Convert favorite photographs to black and white, and then hang them in simple frames. Hint: First lay out the frames on a large sheet of paper. Mark where nails will go, and then tape the paper to the wall. Remove the paper after you hammer in the nails. ►



Design a Room for Double-Duty

Forget the idea of separate rooms for separate activities. Ann says that Tucker Bayou's family room is a social space and a media space all in one. The flat-screen television hides in a niche behind custom-built panels. They can be opened when it's viewing time and then closed when the focus is on cocktails and conversation.

Let Color Pop

Throughout this house, you'll find color—chocolate brown, teal, orange, and chartreuse—trickling through every room. "You can always add color to a great base palette," Ann explains. In the family room, creamy neutrals set the stage for showstopping hues that were inspired by a large canvas painting on one wall.

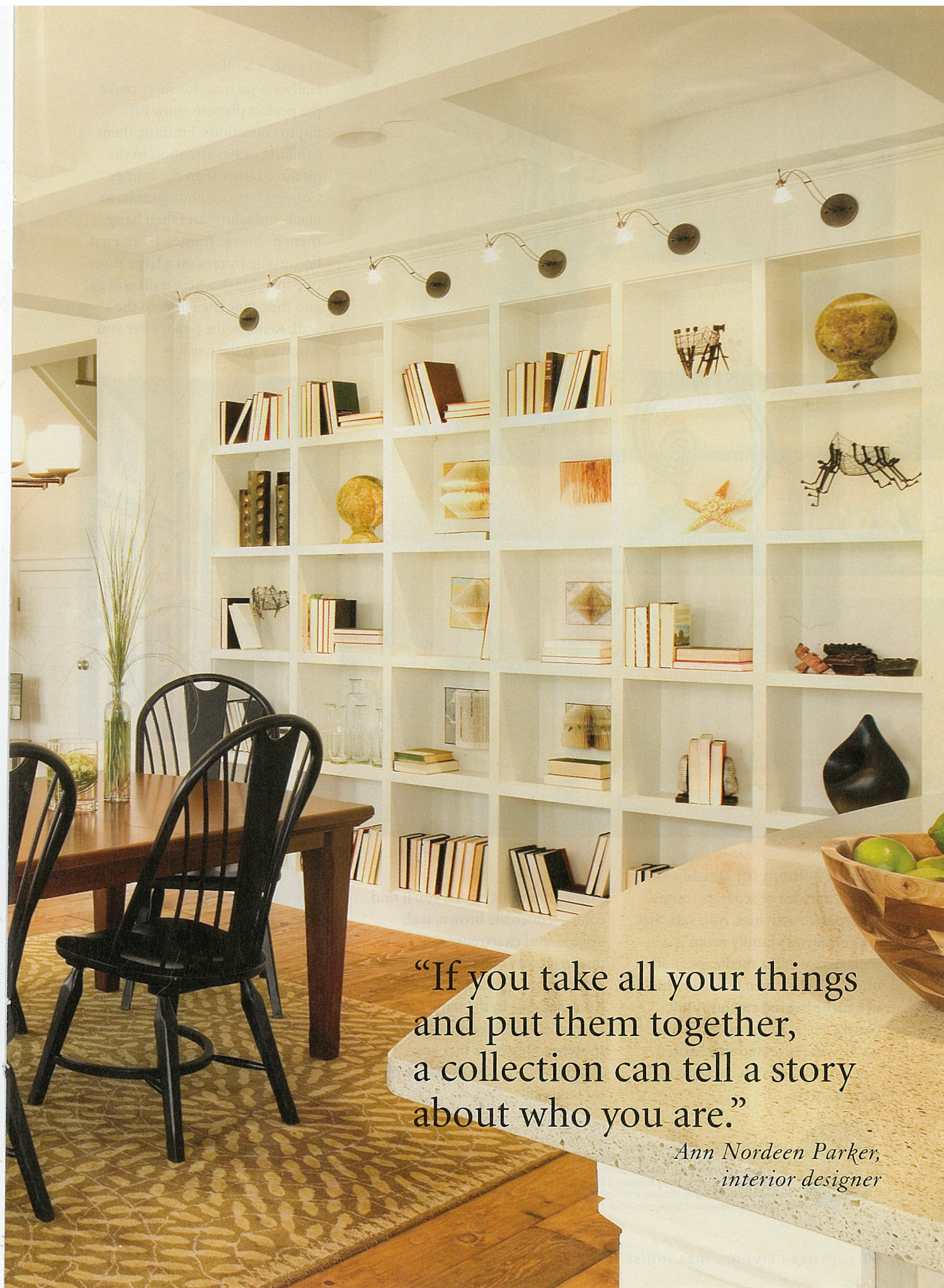


JAMES HARDIE, national sponsor
HardiePlank lap siding, backed by a 50-year product warranty, enhances the exterior at Tucker Bayou. Available prefinished with ColorPlus Technology, James Hardie siding is designed to last, holding up against temperature swings, damp climates, and hurricane-force winds. For more information visit www.jameshardie.com, or call 1-866-4-HARDIE.



KRAFTMAID CABINETRY, national sponsor
KraftMaid specializes in built-to-order cabinetry with a custom look, but not the custom price or lead time. KraftMaid offers the widest selection of styles and finishes that range from country to contemporary. Their cabinets dress up the kitchens in our Florida and Georgia Idea Houses. To learn more visit www.kraftmaid.com, or call 1-888-562-7744.

SPONSOR TEXT: KIKI TITTERUD / SPONSOR PHOTOGRAPHS: BETH DREILING HONTZAS



“If you take all your things
and put them together,
a collection can tell a story
about who you are.”

*Ann Nordeen Parker,
interior designer*



Smart Choices in the Kitchen

Healthy living is about more than calories and fat grams. Appliances should be positioned based on ergonomics. Here the dishwasher is raised slightly for ease of use and optimum comfort. On the aesthetic side: The sink is recessed in the island so dirty dishes can't be seen in between use and the next dishwashing cycle.



Accent With Tile

Give sparkle to a backsplash with white glass tile. In the kitchen, this contemporary touch is a light and bright addition against the taupe cabinets. Take glass tile all the way to the ceiling to make natural light really bounce around a space. ►



JELD-WEN INTERIOR DOORS, national sponsor
JELD-WEN molded doors lead to the bedrooms, baths, and closets at the Florida Idea House and are heavier than the alternative hollow-core models. They appear like real wood but won't warp, swell, or split. Panels set in the doors add a decorative detail. Visit www.jeld-wen.com, or call 1-800-877-9482, ext. PRSH, for more information.



JELD-WEN WINDOWS & PATIO DOORS, national sponsor
JELD-WEN windows and patio doors are clear winners in Tucker Bayou. The glass panels are Low-E glass, a type of insulating glass that significantly blocks harmful UV rays and the sun's infrared heat, reduces condensation, and delivers greater visible light transmittance than tinted glass. Visit www.jeld-wen.com, or call 1-800-877-9482, ext. PRSH.



Get the Message

Cover an eyesore with a simple solution. The electrical panel in the multipurpose room is hidden behind a cute sliding message board. Go old school with a black chalkboard, or opt for the squeaky clean of a dry-erase board. You can see phone messages and upcoming events at a glance.



GE APPLIANCES, *national sponsor*

The new and improved appliances from GE arrange a marriage between style, innovation, and affordability, offering the best in design and technology. The new full-width panoramic window on the oven door in this kitchen provides an unobstructed view of foods as they cook. For more information visit www.geappliances.com, or call 1-800-626-2005.



SUNBRELLA®, *national sponsor*

Sunbrella's fade-proof, stain-resistant fabrics endure the harshest of environments while adding color, pattern, and comfort to any living space. Whether it's in the dining room or on the patio, Sunbrella fabrics clean with ease, letting you accentuate your life with long-lasting style. See them in our Florida and Georgia Idea Houses. Find a fabric you love at www.sunbrella.com.



Evoke Room Envy

Every on-the-go family needs a multipurpose room, and Carson describes this hardworking area between the kitchen and laundry room as the filter of the house. There is space to store daily necessities, such as purses, cell phones, and keys. Hang coats on hooks or store shoes in a cubby. A metal table is a great place to drop off groceries between the garage and kitchen or for cutting fresh flowers to use throughout the house. Four-legged residents aren't forgotten: A pet-feeding center includes a spot for bowls and storage for food, leashes, and other items. ►



Dreamy Built-ins

Slide the bed into a cozy nook on a wall of shelves. In the master bedroom, the simple shape of an upholstered headboard sits surrounded by storage and display space. Light fixtures are installed on either side of the bed so there's no need for a lamp. Fill shelves with bedtime reading materials and cherished accessories.



Standout Style

Mix up the shapes and sizes of your tile, but keep them all the same color. The square floor tiles here are laid in a diagonal pattern; rectangular tile surrounds the base of the tub. Between two tile chair rails, a harlequin design stretches above the tub. ►

Perks for Working

No modern house is complete without technology. Stay connected anywhere in the house (or right outside) with wireless Internet access. Visiting family and friends are treated to their own office in the guest room upstairs, where reclaimed attic space creates a workstation. A drapery closes off the area so one person can surf the Web while the other drifts off to dream on the four-poster bed.



Whether you're building or remodeling, it's hard to say what's more beautiful. The way James Hardie® siding looks. Or the way it stands up to the elements.

James Hardie siding is tough. Remarkably so. And to prove it, most of our products come with up to a 50-year transferable warranty. And unlike vinyl, it has all the charm, beauty and character of wood. James Hardie siding provides lasting protection with very little maintenance.



Resists rotting, cracking and fading



Resists damage from cold climates



Resists damage from moisture



Resists damage from impact



Resists flame spread



Resists insect damage



JamesHardie

©2007 James Hardie Building Products, Inc.



Space for Sharing

A bunk room provides a lively and colorful space for several guests. But don't think this is like going to summer camp. The bottom bunks offer flip-down flat-screens for individual viewing. A walk-in closet has cubbies for storage. A Jack-and-Jill bath links this space to another bedroom. ►



For More Info

Take a virtual tour of Tucker Bayou:

southernlivingideahouse.com



BROYHILL, national sponsor

With a wide range of styles and affordable prices, Broyhill furniture is perfect when updating your home. The company boasts extensive product lines identified by designer appeal and solid construction, shown with a coastal flair on the chair and in the upholstery color scheme in the master bedroom here. Visit www.broyhillfurniture.com, or call 1-800-3-BROYHILL.

key contributors

Community

WaterSound

Developer

The St. Joe Co., Jacksonville, Florida
• Greg Gardiner

Architecture

Looney Ricks Kiss Architects, Inc., Memphis
• J. Carson Looney, FAIA
• Preston Bussard
• Chris Haley

On-Site Builder

The St. Joe Co., WaterSound
• Darrell White

Modular Builder

Haven Custom Homes, Inc.,
Ridgeland, South Carolina
• Stephen Bassett
• Tim Watson

Interiors

Looney Ricks Kiss Architects, Inc., Memphis
• Ann Nordeen Parker, ASID

Landscape Design

Alan D. Holt, ASLA, Panama City Beach, Florida

Charity

Audubon of Florida

National Sponsors

Broyhill	Lennox
Cabot Stain	Shaw Floors
GE Appliances	Subaru
James Hardie	Valspar Paint
JELD-WEN Windows & Patio Doors	
JELD-WEN Interior Doors	



Entertaining Alfresco

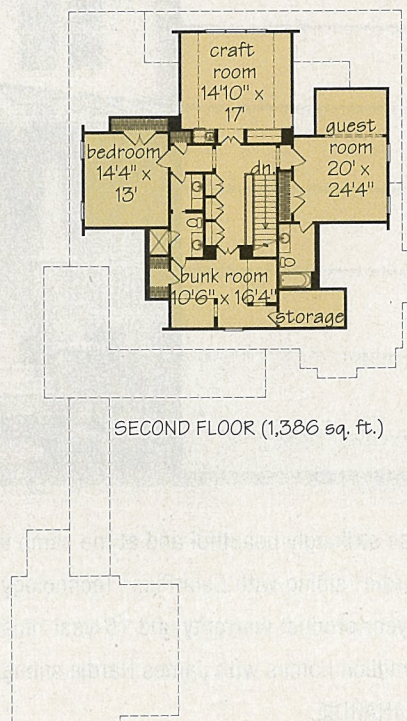
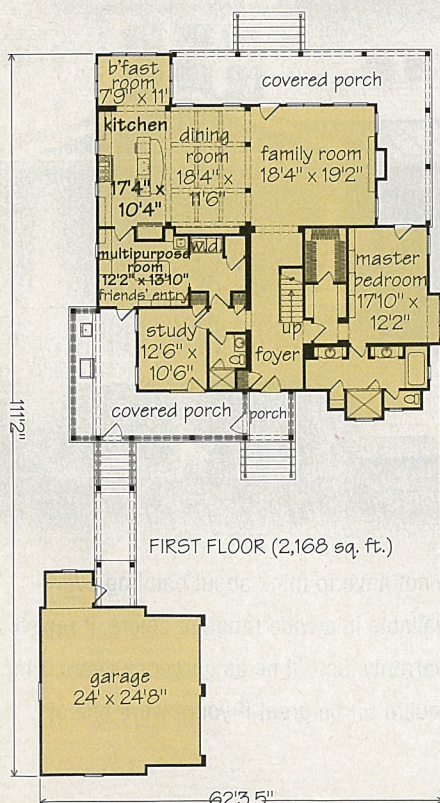
No Southern home would be complete without a screened porch. At Tucker Bayou, this seating spot is right off of the friends' entry and overlooks the golf course. We can't think of a better place to enjoy a cool drink and watch the sun fade away. The grill is nearby, making it even easier for the host to join the party.

For More Info

Building team

sources:

southernliving.com/august2007



directions

Tucker Bayou is located in Northwest Florida in the community of WaterSound. From the intersection of U.S. 98 and U.S. 231 in Panama City, travel west on U.S. 98 for 22 miles, crossing Lake Powell, and proceed an additional 3.2 miles. The entrance to WaterSound is on the right (north side of U.S. 98). Turn into the community, and follow the signs to the *Southern Living* Idea House.

The house will be open through Sunday, September 30. Hours are 11 a.m.-5 p.m. Wednesday-Saturday and 1-5 p.m. Sunday (closed Monday-Tuesday). Admission is \$5; a portion of the proceeds will benefit Audubon of Florida.

To order working drawings of Tucker Bayou #1408, call 1-866-892-3507, or visit southernlivinghouseplans.com.